



Flight Plan & Site Survey

Created using **RPAS Wilco®**

| | |
|--------------------------|--|
| Reference No: | 01CD93 |
| Operation Name: | Shuswap Lake Mall Show |
| Pilot Name: | |
| Pilot Certificate: | |
| Flight Start: | March 28, 2024 12:09 PM |
| Flight End: | March 28, 2024 2:09 PM |
| Flight Area (Latitude): | 50° 41' 39.80" N (50.694) |
| Flight Area (Longitude): | 119° 17' 56.10" W (-119.299) |
| Altitude - Radius: | Alt: 400 ft - Rad: 926.0 m (0.5 nm) |
| Airspace: | UNCONTROLLED |
| FIR - Contact: | CZVR - 604-586-4500 |

Please ensure you received all required authorizations prior to flight.

Disclaimer

This Site Survey was created using RPAS Wilco by AIM Robotics. The flight plan contained is intended only for RPAS flights on the date/time and location specified. The user accepts all responsibility for the accuracy and completeness of the information contained.

For the complete Terms & Conditions, see

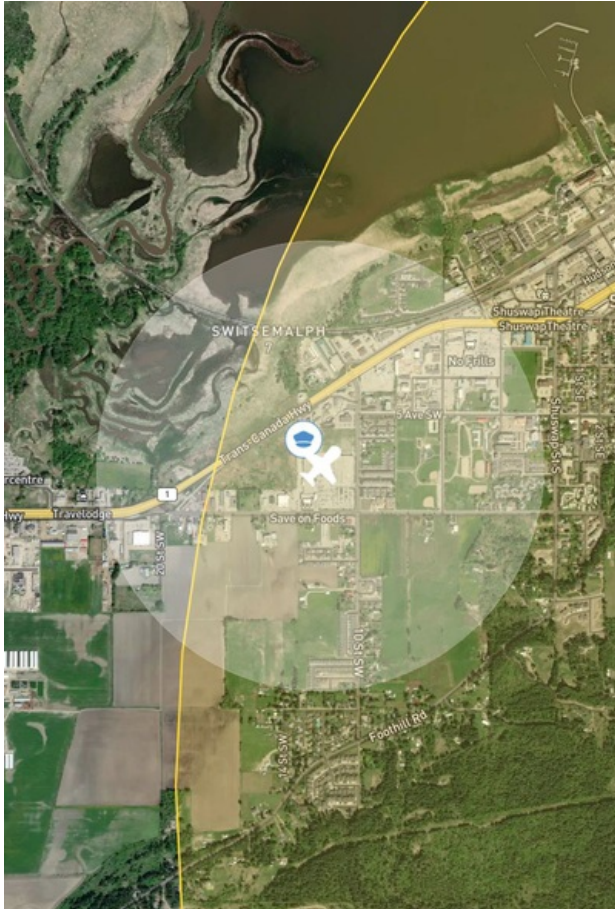
<https://rpaswilco.com/#/tnc>

Included



- Site Survey
- Obstacles (if available)
- Nearby Aerodromes
- Canadian Aviation Regulations
- GFA
- Aerodrome Supplements
 - METAR & TAF (if available)
 - NOTAMs
 - CFS



Flight Map

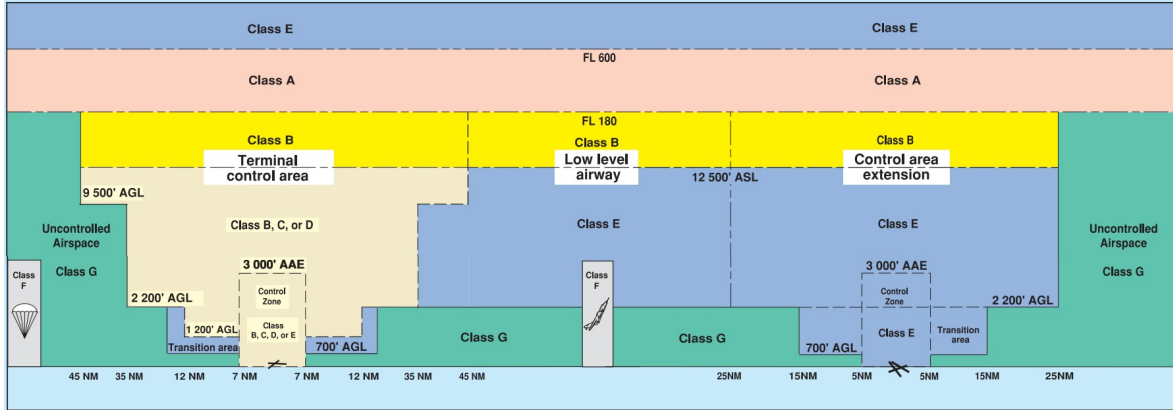


MAP Details

| | Latitude | Longitude |
|--|---------------------------------|------------------------------------|
|  MODEL | 50° 41' 39.80" N (50.694) | 119° 17' 56.10" W (-119.299) |
|  Pilot | 50° 41' 43.40" N (50.6954) | 119° 17' 59.70" W (-119.2999) |



Airspace Classification



Overlying Airspaces

| Class | Name | Floor | Ceiling |
|-------|---------------------------|----------|----------|
| E | Williams Lake, BC CAE | 8000MSL | 12500MSL |
| B | Williams Lake, BC CAE | 12500MSL | 18000MSL |
| E | T676 Airway MEA: 12800MSL | 2200AGL | 12800MSL |
| B | T676 Airway MEA: 12800MSL | 12800MSL | 18000MSL |
| E | T687 Airway | 2200AGL | 12500MSL |
| B | T687 Airway | 12500MSL | 18000MSL |
| E | T799 Airway | 2200AGL | 12500MSL |
| B | T799 Airway | 12500MSL | 18000MSL |
| E | T713 Airway | 2200AGL | 12500MSL |
| B | T713 Airway | 12500MSL | 18000MSL |

Nearest Aerodromes & Distance from Operation

SALMON ARM (CZAM - AERODROME - Reg)

Lat: 50.682

Long: -119.229

5.114 KM

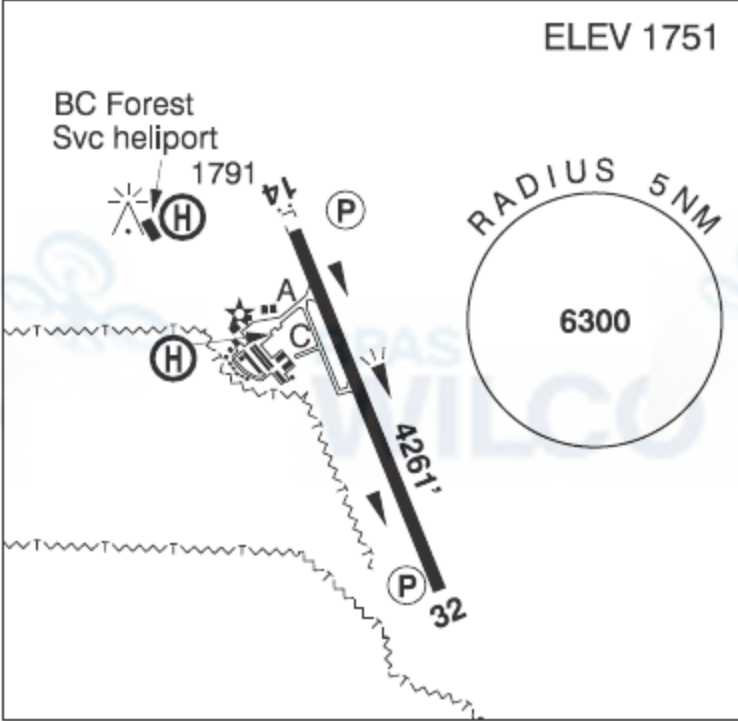
2.76 NM

BRITISH COLUMBIA

AERODROME/FACILITY DIRECTORY

SALMON ARM BC

CZAM

| | | |
|---------------|---|--|
| REF | N50 40 57 W119 13 43 2SE 16°E (2013) UTC-8(7) Elev 1751' A5005 LO2 RCAP |  |
| OPR | City of Salmon Arm 250-832-1000 O/T 250-524-0567 Reg Ldg fees may be levied | |
| PF | A-1,6 C-2,3,4,5 | |
| FLT PLN | | |
| FIC | Kamloops 866-WXBRIEF (Toll free within Canada) or 866-541-4101 (Toll free within Canada & USA) | |
| WX | AUTO (see COMM) WxCam | |
| SERVICES | | |
| FUEL | 100LL, JA-1, MG-3 250-832-1000 15-02Z (DT 13-04Z) | |
| OIL | All | |
| S | 1,2,3,4,5 | |
| RWY DATA | Rwy 14(142°)/32(322°) 4261x75 ASPH Rwy 32 first 1420' down 1.9% | |
| RCR | Opr Ltd win maint | |
| LIGHTING | 14-AS(TE ME) P1 3.5°, 32-(TE ME) P1 3.5° ARCAL-122.9 type K exc RILS (rwy 14) on high setting only. | |
| COMM | | |
| RCO | Pacific rdo 122.375 (FISE) 126.7 (bcst) | |
| MF | UNICOM ltd hrs O/T tfc 122.9 5NM 4700 ASL (CAR 602.98) | |
| AUTO | 122.55 | |
| RESTRIC-TIONS | OPERATING RESTRICTIONS 1. Pursuant to CARS 602.96(3)(D), not certified for ngt ops unless all hazard beacons are oprg. | |
| PRO | Circuit altitude 3000 ASL. Rgt hand circuits Rwy 32 (CAR 602.96). Night Ops: Follow circuit pro as depicted on VFR terminal ngt circuit pro chart. During parachuting activity over A/D Apr 1-Oct 31, overfly field over Thld 32. | |
| CAUTION | Only pilots familiar with local terrain should use this A/D dur hrs of darkness. Numerous P-lines in vic of A/D. Hang glider act sfc to 10,000 ASL within 15NM of A/D. Check for NOTAM. | |